

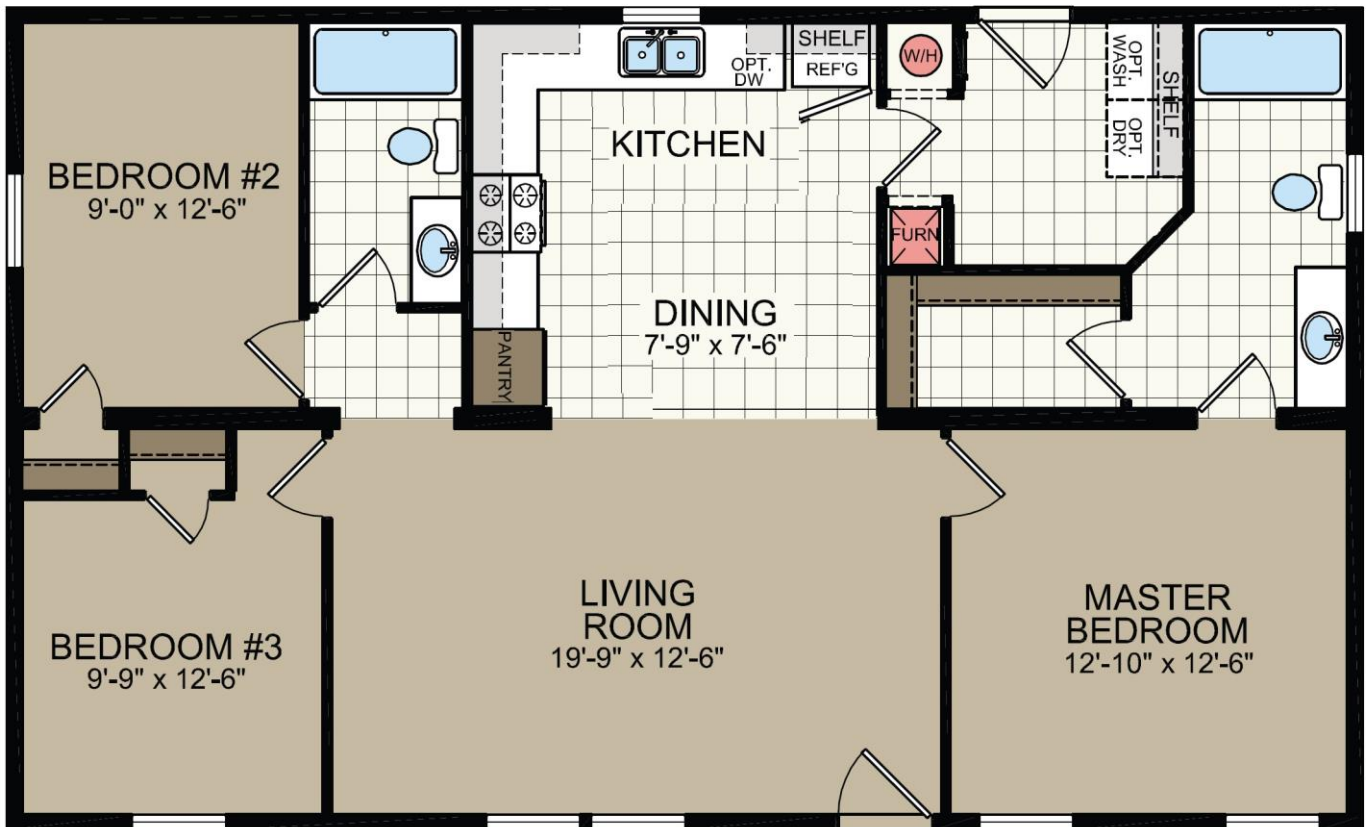


PATRICK J. WHITLEY
105 PANTON RD
VERGENNES, VERMONT 05491
OFFICE - 802-877-3257
FAX - 802-877-8369
WWW.TCHVT.COM • INFO@TCHVT.COM

AVAILABLE TO PURCHASE OFF LOT

26'8" x 44' SVS595A 1173 SF

Price As Displayed \$123,500



26'8"x44' SVS595A 1173 SF Price As Displayed \$123,500
Price Includes:

40# ROOF LOAD 16" O.C. 3/12
R-33 FLOOR & ROOF, R-24 WALL
INSULATION
2X6 FLOOR JOISTS 16" O.C.
FOAM CORE SHEATHING
7'6" SIDEWALL W/ CATHEDRAL CEILING
3/12 LARGE FLUSH DORMER @ FRONT
DOOR
HIGH EFFICIENCY GAS FURNACE
IN-LINE HEAT FLOOR REGISTERS
40 GAL GAS W/H
DRIP PAN FOR WATER HEATER
WATER SHUT-OFFS MAIN
PLUMB & WIRE FOR WASHER
ROOF JACK EXTENSION FURNACE & W/H
EXTERIOR FROST FREE FAUCET
NEW ENGLAND CODE
36X80 FRONT & 36" 9-LITE REAR DOOR
36" 9-LITE REAR DOOR
RAISED PANEL SHUTTERS FRONT
3-TAB SHINGLES
DOUBLE 4" VINYL SIDING
LOW "E" THERMAL WINDOWS
100 AMP ELECTRIC SERVICE
EXTERIOR GFI RECEPTACLE
LIGHT @ ALL EXTERIOR DOORS

TV & PHONE JACK
PHOTO ELECTRIC SMOKE DETECTOR
TONE & VOICE COMBO DETECTORS
PHOTO ELECTRIC/CO DETECTOR X2
SECOND CONDUIT IN PANEL
WIRE & VENT FOR DRYER
CARBON MONOXIDE DETECTORS
DECOR PACKAGE
WHITE 2-PANEL INTERIOR DOORS
LINOLIUM THROUGHOUT HOUSE
STIPPLE TEXTURED CEILING
ARCHWAY MATERIAL UMBER OAK
METAL DOOR KNOBS
WIRE VENTED SHELF @ CLOSETS
MDF CABINET DOORS & STILES
FORMICA TOPS & BACKSPLASH
STAINLESS STEEK KITCHEN SINK
GAS RANGE
18CF REFRIGERATOR
DISHWASHER
VENTED/LIGHTED RANGE HOOD
ENERGY STAR PACKAGE
INSLATED SKIRTING, HUD INSPECTION
PRESSURE TREATED STEPS FRONT & REAR,
FREIGHT, SET UP, VT SALES TAX

Pricing Based On Lot Model Home As Of 12/21/22
Options & Prices May Change Without Notice For Newly Ordered Homes.