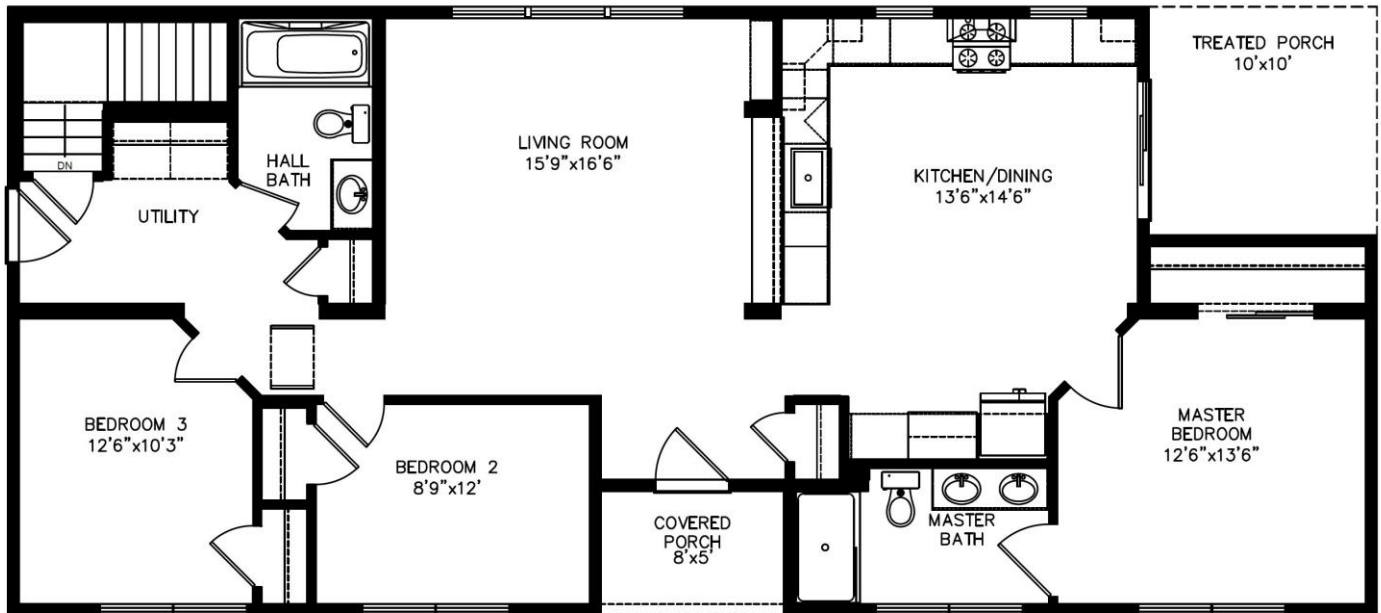




PATRICK J. WHITLEY  
1758 US ROUTE 7  
FERRISBURGH, VERMONT 05456  
OFFICE - 802-877-3257  
FAX - 802-877-8369  
WWW.TCHVT.COM • INFO@TCHVT.COM

**New Era Edge New Haven Ranch**  
**26'-8" x 60' 1456 SF House & 144 SF Porches**



(Approximate Plan & Elevation W/ Upgraded Options)

# New Era Edge New Haven Ranch

## 26'-8"x60' 1456 SF House & 144 SF Porches

### Purchase This Quality Home As Shown On Lot...

Jade Interior Package **Free For Limited Time**	
Jade Exterior Package	\$1,800
7/12 Roof ILO 5/12	\$3,300
16" O.C. Roof Trusses For 7/12 Roof	\$3,240
9 1/2 Overhang ILO 7" Overhang	\$1,320
Full Length Gable Return For Dormer	\$245
7/16 OSB Sheathing ILO OX Board	\$865
NEV722 21/13 9" Double Dormer	\$2,200
2x4 16" O.C. Interior Walls	\$300
R-49 Ceiling Insulation ILO R-38	\$600
R-24 Exterior Wall Insulation ILO R-21	\$546
R-5 1" Foamboard Exterior	\$3,640
D7 Shake Siding @ Dormer	\$400
Silverline 24210 .27 ILO Kinro (2)	\$618
Silverline 3046 .27 ILO Kinro (11)	\$3,927
Tempered 3046 Window Per Code (2)	\$378
Silverline Slider ILO Kinro	\$525
Coretec Enhanced Flooring Foyer, Kitchen, LR	\$5,918
3/0 Interior Door (2)	\$52
36" Low Profile Hood Black	\$182
Self Clean Gas Range	\$1,525
21 CF Frost Free Refrigerator	\$1,449
6 Cycle Dishwasher	\$594
Built In Microwave	\$353

LED Under Cabinet Light Per 12.5" (5)	\$475
Schluter Tilebar AE125 @ Bathrooms (8)	\$24
RE7236 6' Tub/Shower ILO Standard	\$376
60" Palisade Tile Shower	\$970
Black Pendant Light (3)	\$135
Photo Electric Smoke Detector (5)	\$105
4" Recessed Lights (3)	\$105
Programable Thermostat	\$93
Washer Plumb	\$215
Dryer Vent & Receptacle	\$229
Bookshelf @ LR 36BC4	\$370
Wooden Shelf Over Washer/Dryer (10)	\$250
Brushed Nickel Paddle Fan (2)	\$370
Pull-Out Trays Throughout House (2)	\$476
White Vinyl Railing & Posts For Porch	\$1,000
<b>Total Options As Displayed</b>	<b>\$39,170</b>
<b>Estimated Price As Of 3/27/24</b>	<b>\$223,050</b>

**Home Prices Include: House, Delivery, Set-up, Vermont Sales Tax, Crane, Builder Grade Basement Steps, Pressure Treated Steps At Exterior Doors (No Landings) & Lally Columns For Basement**

**\*\*Due to fluctuating costs & availability of materials, the pricing & specifications will not be finalized until 10 weeks prior to the house being built in the factory.\*\***