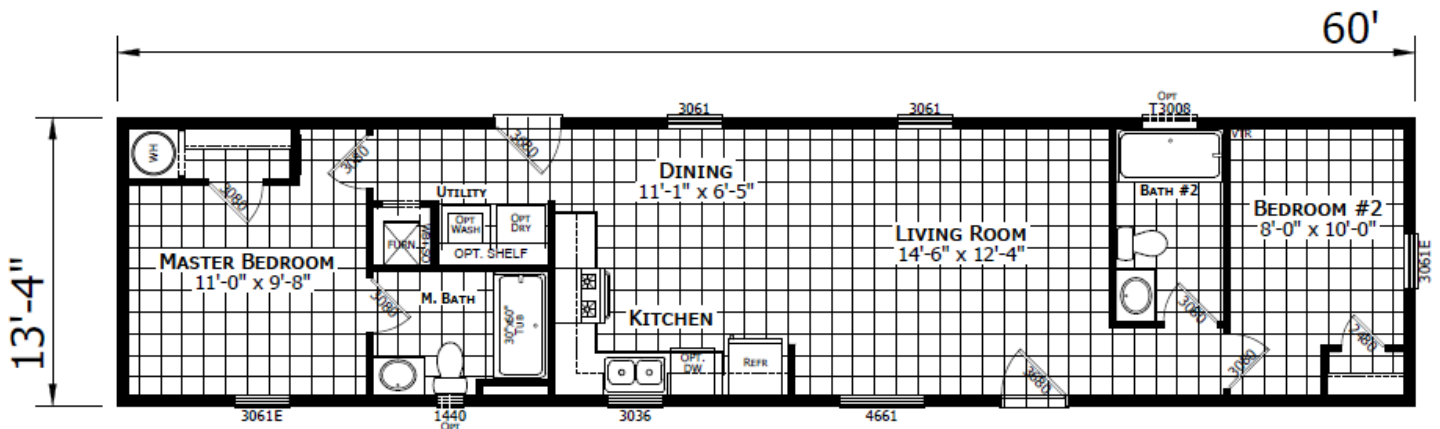




PATRICK J. WHITLEY  
 1758 US ROUTE 7  
 FERRISBURGH, VERMONT 05456  
 OFFICE - 802-877-3257  
 FAX - 802-877-8369  
 WWW.TCHVT.COM • INFO@TCHVT.COM

**Titan Eastpoint Affinity Singlewide**  
**13'-4" x 60' 800 SF**



**Purchase This Quality Home As Shown On Lot...**

CENTER SHELF IN KIT. BASE CABS	\$70
ALL BRAKE AXLES	\$118
R-24 WALL INSULATION - SW (60)	\$810
ENERGY STAR PACKAGE - HUD	\$795
PHOTO ELECTRIC SMOKE DETECTOR	\$150
WHOLE HOUSE WATER SHUT-OFFS	\$50
SECOND CONDUIT IN PANEL BOX	\$33
PHOTO ELEC./CO COMBO	\$81
TONE & VOICE COMBO DETECTORS	\$60
7/16" OSB W/WRAP IPO FOME CORE	\$777
60" LG SHOWER EXCH. 1PC. TUB	\$236
40 GALLON ELECTRIC WATER HEATER	\$80
EXTRA BRAKE AXLE	\$398
40# ROOF LOAD	\$558
WASHER/DRYER SHELF	\$20
MICROWAVE	\$450
DISHWASHER - INSTALLED	\$375
EXTERIOR FROST-FREE FAUCET (2)	\$82
EXTRA EXTERIOR GFI RECEPTACLE	\$50

NEW ENGLAND CODE	\$75
CARBON MONOXIDE DETECTORS	\$72
R-38 ROOF INSULATION, SW	\$181
ICE GUARD	\$199
R-33 FLOOR INS EXCH. R-22 DW	PKG
SMART WI-FI THERMOSTAT	PKG
<b>Total Options As Displayed</b>	<b>\$5,720</b>
<b>Total House &amp; Options</b>	
<b>Estimated Price As Of 3/7/26</b>	<b>\$84,950</b>

**Home Prices Include: House, set-up, Vermont sales tax, freight, jack stands, fiberglass steps at 2 primary doors, insulated skirting and Vermont HUD inspection. (NY may require additional tax and state seal)**

**\*\*Due to fluctuating costs & availability of materials, the pricing & specifications will not be finalized until 10 weeks prior to the house being built in the factory.\*\***