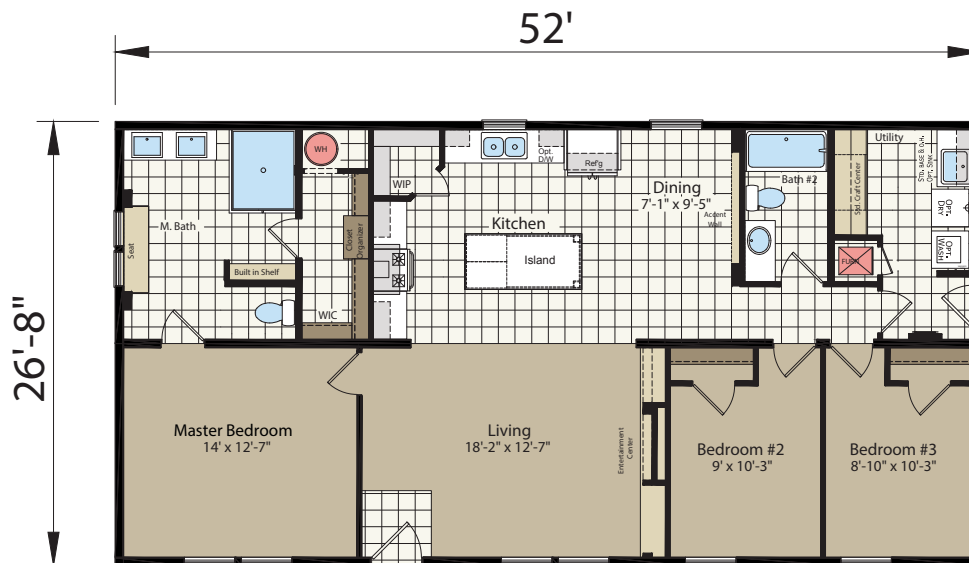




All the best features, under one roof

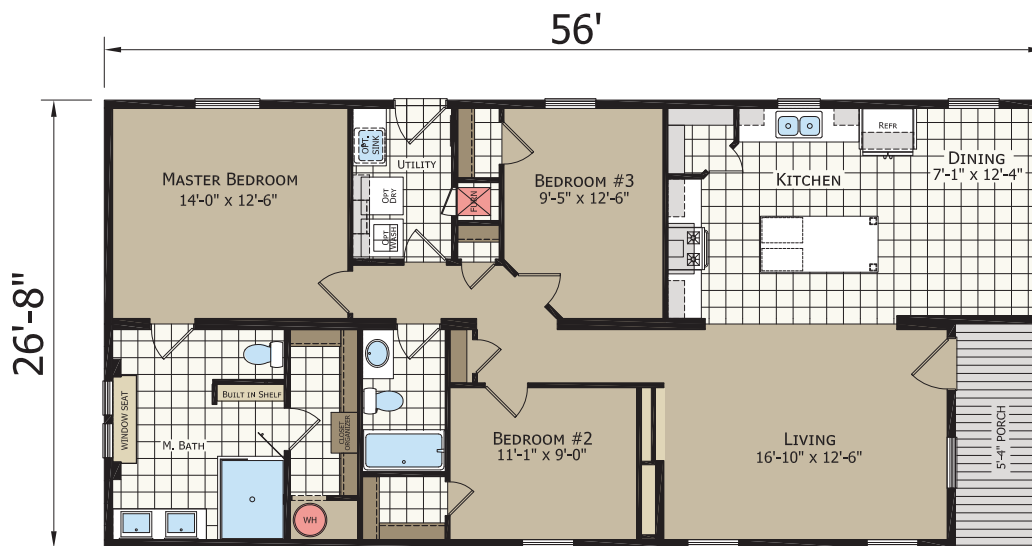
2-10

3 Bedroom, 2 Bath
1387 Sq. Ft.



2-25

3 Bedroom, 2 Bath
1493 Sq. Ft.



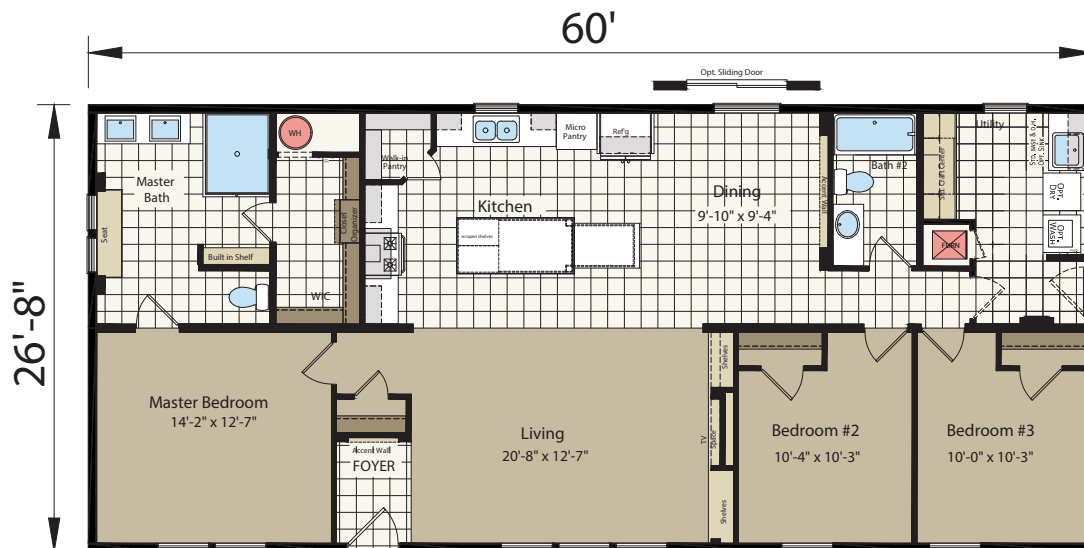
2-20

3 Bedroom, 2 Bath
1493 Sq. Ft.



2-30

3 Bedroom, 2 Bath
1600 Sq. Ft.

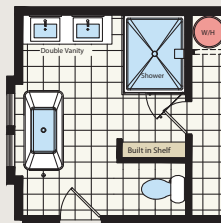


2-40

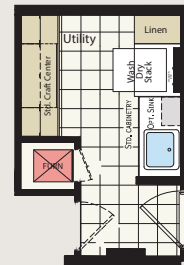
3 Bedroom, 2 Bath 1707 Sq. Ft.



OPTIONS
AVAILABLE ON
ALL MODELS*



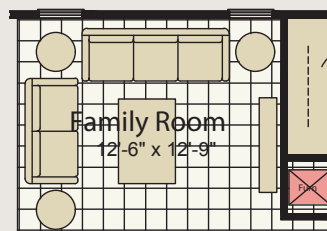
M. Bath - B.



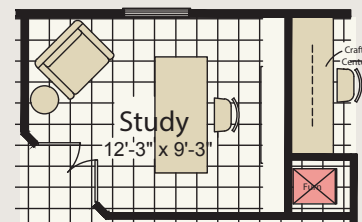
Opt. Utility w/ Stacked W/D

*Not Available in Model 2-25

OPTIONS
AVAILABLE ON 64'



Opt. Family Rm



Optional Study





ELEVATION A



ELEVATION B



ELEVATION C

CATENA

STANDARD FEATURES

CONSTRUCTION

- 4" Recessed Frame
- Detachable Hitch
- Double 4" Vinyl Siding
- Vinyl Lineals Front Door Side
- Versatex® Vinyl Door Trim
- Versatex® Vinyl Trim at Windows Under Dormer
- 7/16" OSB Sheathing with Housewrap
- 8' Sidewall Construction
- 30 lb. Roof Load – 24" O.C.
- Wind Zone 1
- 10" Eaves Gable Ends and Sidewalls
- 3/12 Roof Pitch
- Boots and Registers
- Low-E Thermal Windows
- Roof Insulation
- Floor Insulation
- Exterior Wall Insulation
- 2X6 Exterior Walls – 16" O.C.
- 2X6 Floor Joists – 16" O.C.
- 2X4 Double Marriage Line
- 8' Flat Ceilings Throughout
- 1/2" Ceiling Drywall
- Stipple Ceiling Texture Application
- Finished Drywall Including Closets
- 36/80 Fiberglass Front Door-No Storm
- 36/80 9-Lite Rear Door-No Storm
- White Coach Light – Exterior Doors
- 3-Tab 25-Year Shingles
- Catena Dormers – Per Model
- (6) Corbels (3 Per Dormer)
- Elevation "A"

ELECTRICAL & PLUMBING

- PEX Water Lines
- 15 kW Electric Furnace
- Metal Furnace Door
- Nest® Thermostat
- 30-Gallon Electric Water Heater
- Living Room Switch to Receptacle
- Whole House Vent Fan
- Water Heater Drip Pan
- Plumb for Washer
- Wire for Dryer
- (1) Exterior GFI Protected Outlet
- CO Detectors Per Code
- GFCI Protected Outlets Per Code
- Switch-to-Light All Walk-in Closets
- Recessed LED Ceiling Lights Throughout
- Smoke Detectors Per Code
- 200 Amp Electrical Service
- All Copper Wiring
- Whole House Water Shut-off

INTERIOR FINISHES

- Congoleum® Linoleum
- Shaw® Carpet
- Lever Locksets – All Interior Doors
- Rebond Carpet Pad
- Mini Blinds & Catena Drape Package
- 2-3/4" Residential Molding Cove, Doors & Windows (White Only)
- Base Molding in Impact Areas Only
- Wire Vented Shelves All Closets
- Archway Material (Sheetrock)
- Roberto's Entertainment Center
- White 6-Panel Interior Doors
- Interior Accent Walls
- Finished Ceiling Joints Impact Area

KITCHEN FEATURES

- 1 Row Ceramic Backsplash
- 36" Counter Height
- 30" Overhead Cabinets
- Refrigerator Cabinet with Shelf
- Hardwood Cabinet Doors Throughout Home
- Solid Hardwood Styles Throughout Home
- Multi-functional Island with Waterfall Extension (except 52')
- Hidden Cabinet Hinges
- 6" Euro Pulls Cabinets & Drawers
- Lined Overhead Cabinets
- Adjustable Shelving in Overheads
- Bottom Panel Underneath Cabinet
- Drawer Over Door Construction
- Side Mount Roller Guides
- Undermount Sink & Pullout Faucet
- Granite Countertops Throughout Kitchen
- Black Stainless Steel Electric/Gas Range
- Black Stainless Steel Side-By-Side with Ice & Water Refrigerator
- Black Stainless Steel Dishwasher
- Black Stainless Steel Built-In Microwave
- Stainless Steel Euro Range Hood
- Center Shelves Base Cabinets
- 1 Bank of (4) Drawers

BATHROOM FEATURES

- 1-Piece 60" Fiberglass Tub (Main Bath)
- 48 X 60 Agile® Shower (Master Bath)
- Cultured Marble Double Bowl Countertop (Master Bath)
- Rectangle Porcelain Sink with Euro Faucet (Master Bath)
- 1 Row of Ceramic Backsplash (Master & Main Bath)
- Lighted Vent Fans (All Baths)
- 24X36 LED Mirror X2 (Master Bath)
- Porcelain Commodes (All Baths)
- Porcelain Sinks (Main Bath)
- Tub Overdrape (Main Bath)
- Mirror Above Vanity (Main Bath)



The Catena model is available in different sizes and therefore will have variations in configurations. Floorplans and exterior elevations will vary by region. Décor items such as flooring, cabinet finishes, fixtures, countertop materials and ceramic tile backsplash will vary by region. Some images show optional features.