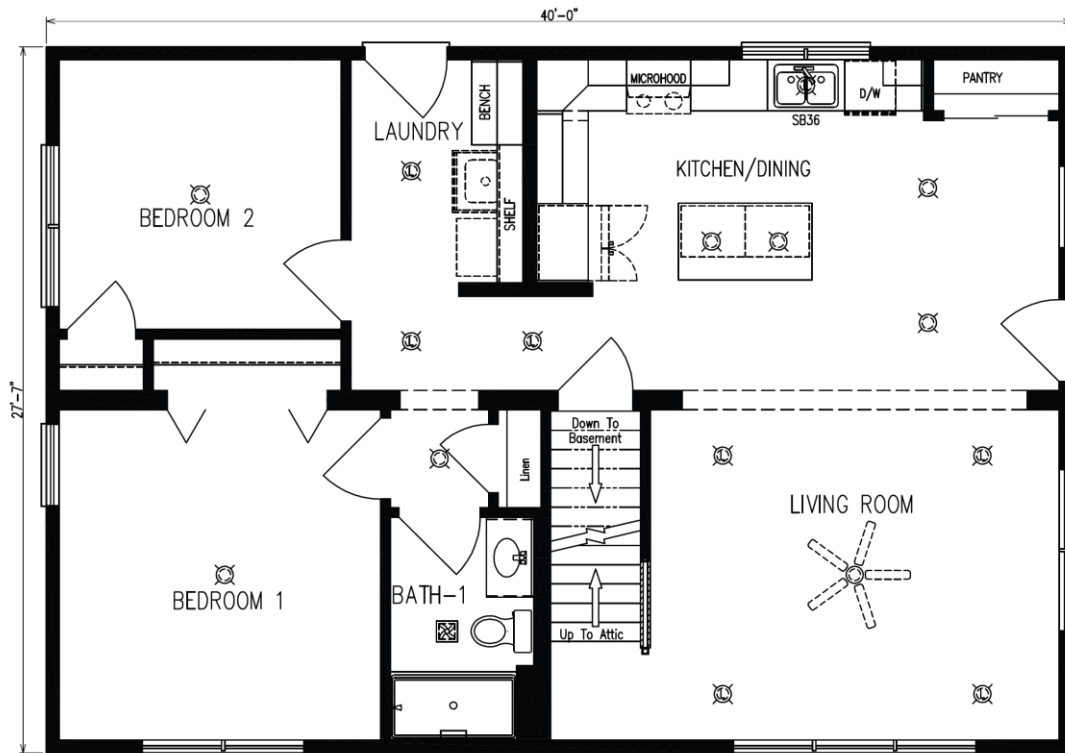




PATRICK J. WHITLEY
1758 US ROUTE 7
FERRISBURGH, VERMONT 05456
OFFICE - 802-877-3257
FAX - 802-877-8369
WWW.TCHVT.COM • INFO@TCHVT.COM

SMI CAPE
27'-7" x 40' 1103 SF



SMI CAPE

27'-7" x 40' 1103 SF

Purchase This Quality Home As Shown On Lot...

Ceiling Insulation R-38/49 Batt	\$1,546
1" R-5 Foam Exterior Wall	\$2,404
16" O.C. Roof ILO 24"	\$4,200
16" O.C. Interior Wall	\$417
Board & Batten Siding	\$4,160
7D Black Windows	\$9,618
Single Vertical Grids In Windows	\$714
Front Door 3/0 S4814 SDLF1LE	\$890
Aluminum Clad Frame Doors	\$350
Painted Exterior Door	\$380
3/0 Interior Doors Per Plan	\$105
Black Interior/Exterior Package	\$260
Stair Railing & Handrail	\$700
Solid Surface Countertop	\$4,998
Full Tile Backsplash	\$1,210
Microwave Range Hood Prep	\$130
Quartz Under Mount Equal Double Bowl Sink	\$695
Pull Down Faucet	\$80
42" Upper Cabinets ILO 30"	\$725
Electric Appliance Package	\$4,695

Base Shelf For Corner	\$235
(4) Double Roll Out Tray Kits In Base Cabinets	\$813
BD12 ILO B12	\$123
Comfort Height Toilet	\$45
Cultured Marble Vanity Top	\$125
Tiled Shower	\$2,395
Bench Seat	\$669
Programable Thermostat	\$105
Fan Box W/ Fixture	\$330
Cape Close Off For 2 nd Floor	\$1,030
Cased Openings @ Marriage Wall	\$318

Total Options As Displayed **\$44,465**
Estimated Price As Of 1/6/26 **\$229,900**

Optional Covered Porch **\$9,800**

Home Prices Include: House, Delivery, Set-up, Vermont Sales Tax, Crane, Builder Grade Basement Steps, Pressure Treated Steps At Exterior Doors (No Landings) & Lally Columns For Basement

****Due to fluctuating costs & availability of materials, the pricing & specifications will not be finalized until 10 weeks prior to the house being built in the factory. ****