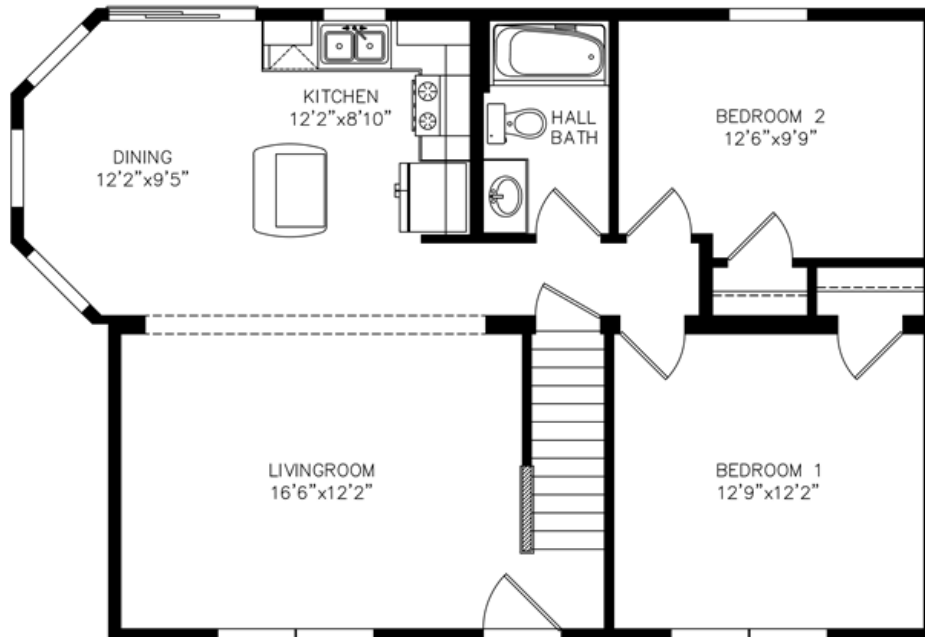




**PATRICK J. WHITLEY
1758 US ROUTE 7
FERRISBURGH, VERMONT 05456
OFFICE - 802-877-3257
FAX - 802-877-8369
WWW.TCHVT.COM • INFO@TCHVT.COM**

New Era Edge Acadia Cape
26'-1"x38'/34' 927 SF First Floor & 450 SF Unfinished 2nd Floor



(Approximate Plan & Elevation W/ Upgraded Options)

New Era Edge Acadia Cape

26'-1"x38'/34' 927 SF First Floor & 450 SF Unfinished 2nd Floor

Purchase This Quality Home As Shown On Lot...

Butterfly For Production Cut For Ship	\$552
16" O.C. Roof Trusses For 12/12	\$2,016
R-30 Batt Faced W/ R-19 Behind Knee Wall	\$212
Gable Return Full Length	\$257
¾" OSB Decking ILO 5/8	\$234
7/16 OSB Sheathing ILO OX Board	\$1,512
R-5 1" Foamboard Exterior	\$1,764
16" O.C. Exterior Walls ILO 24"	\$1,008
16" O.C. Interior Walls ILO 24"	\$123
Series 4400 Siding ILO Std	\$846
Silverline Integrated Lineal Window Trim (11)	\$1,408
*Silverline 24210 .27 ILO Kinro (1)	\$230
*Silverline 3046 .27 ILO Kinro (10)	\$2,750
S213 Front Door ILO Std	\$227
Silverline Slider .27 ILO Std Kinro	\$440
Freshen Up Carpet ILO Std	\$930
Archway Trim Kit	\$308
Black Coil Electric Range	\$470
Black 21 CF Frost Free Refrigerator	\$1,239
Black 3 Cycle Dishwasher	\$396
Black Microwave Range Hood	\$353
Peppercorn Cabinets ILO Std Oak	\$663
Fluorescent Under Cabinet Lights (2)	\$168
2x2 Ironcraft Mosaic Full Backsplash	\$570
Karran E-350 Undermount Stainless Steel Sink	\$554
RN-11 Island	\$822
14" Kitchen Soffit For Flat Ceiling	\$222
Phone Or TV Jack (2)	\$78

Wire For Junction Box (Fan Not Included)	\$67
4" Recessed Lights (1)	\$40
Brushed Nickel Pendant Lights (2)	\$138
Programable Thermostat	\$77
Hot Water Heat Stubbed First Floor	\$799
Cape Two Story Plumbing	\$82
Attic BBHW Prep	\$70
Attic Door For Close Off	\$399
Total Options As Displayed	\$22,024
Estimated Price As Of 3/4/22	\$155,311
*New Code Options That May Not Be In Lot Model	

Home Prices Include: House, Delivery, Set-up, Vermont Sales Tax, Crane, Builder Grade Basement Steps, Pressure Treated Steps At Exterior Doors (No Landings) & Lally Columns For Basement

Average Sitework Costs In Addison County...

6'x10' PT Deck W/ White Vinyl Rails & Posts	\$3,950
Plumbing & Heating BBHW Oil or Gas	\$16,885
Concrete	\$17,000
Sill Plate	\$850
Seal Coat	\$950
Insulate Basement	\$3,400
Hatchway Door	\$850
Electric Not To Exceed 325' Service	\$5,000
Well	\$10,000
Excavation (Lot Dependent)	\$TBD

****Due to fluctuating costs & availability of materials, the pricing & specifications will not be finalized until 10 weeks prior to the house being built in the factory.****